

Patient case 2



Valentina Igorevna
59 years old
Type 2 diabetes

Findings and diagnostic tests



At the doctor's office

- Height 165 cm • Weight 110 kg
- Waist circumference 108 cm • Blood pressure 145/90 mmHg



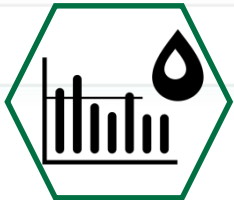
Diagnosis

- Type 2 diabetes • Grade 1 obesity • Dyslipidemia



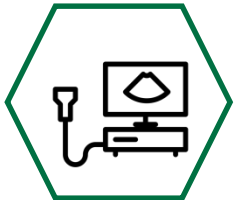
Symptoms

- Right flank pain • Headache • Fatigue



Blood chemistry

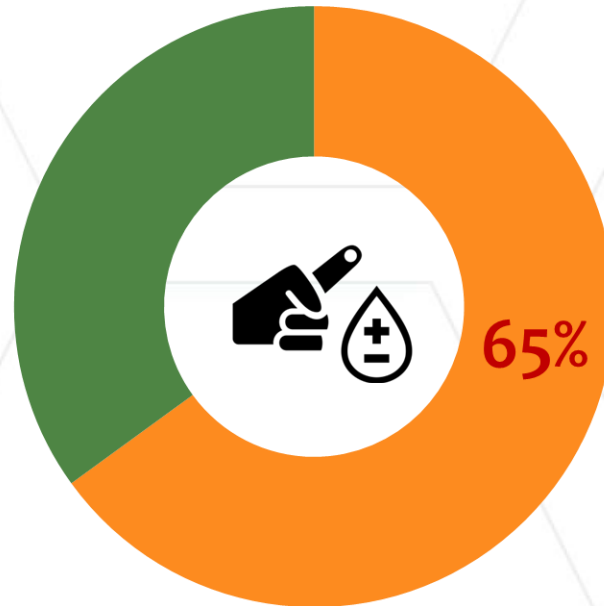
- Alanine aminotransferase 100 U/L
- Aspartate aminotransferase 140 U/L



Liver ultrasound

- Diffusely hyperechogenic • Liver parenchymal echotexture
- Increased vascularity

Two-thirds of patients with type 2 diabetes have NAFLD



**UP TO 65% OF PATIENTS WITH
TYPE 2 DIABETES HAVE NAFLD**

Would you consider treating these patients with essential phospholipids?



NO

Essential phospholipids should only be regarded as an add-on option to standard treatment

YES

Let us guide you through the clinical efficacy data for essential phospholipids

Essentiale® forte N significantly improves liver transaminase activity in patients with NAFLD^{1,2}



• ALT/AST



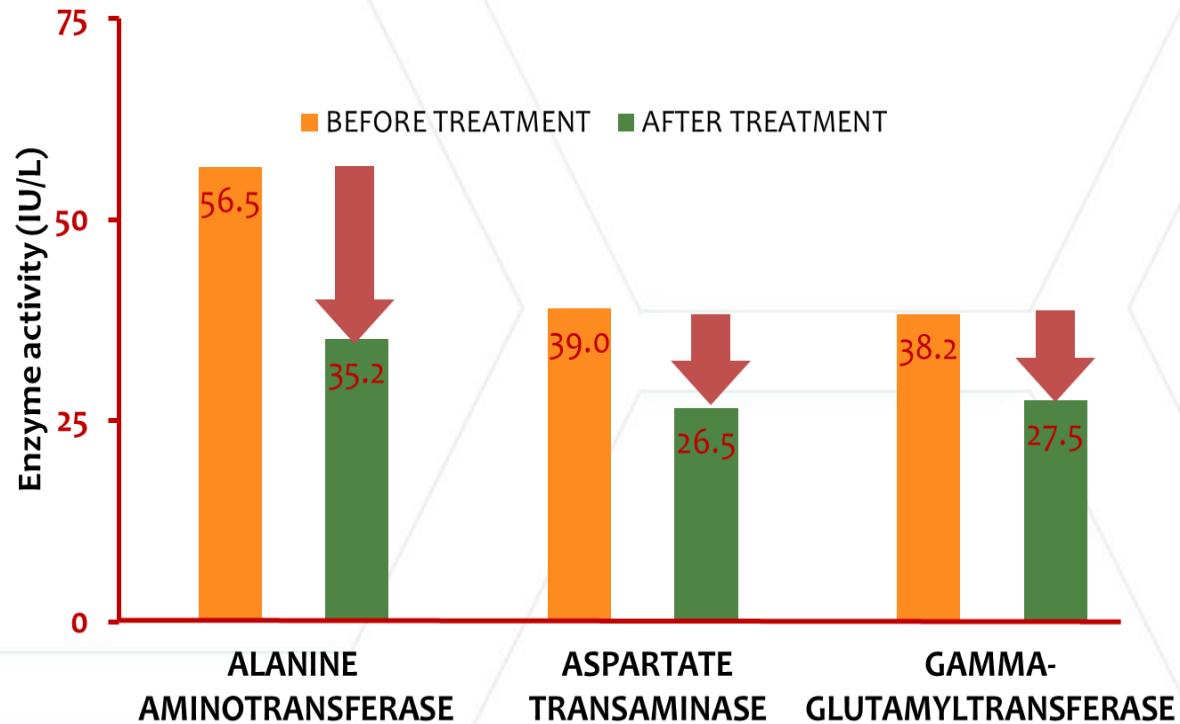
• LIVER ULTRASOUND



• LIPID PROFILE



• HISTOLOGY



Essentiale® forte N significantly improves histological findings in patients with NAFLD¹



• ALT/AST



• LIVER ULTRASOUND



• LIPID PROFILE



• HISTOLOGY



BODY WEIGHT CHANGE (KG)
AT 6 MONTHS

