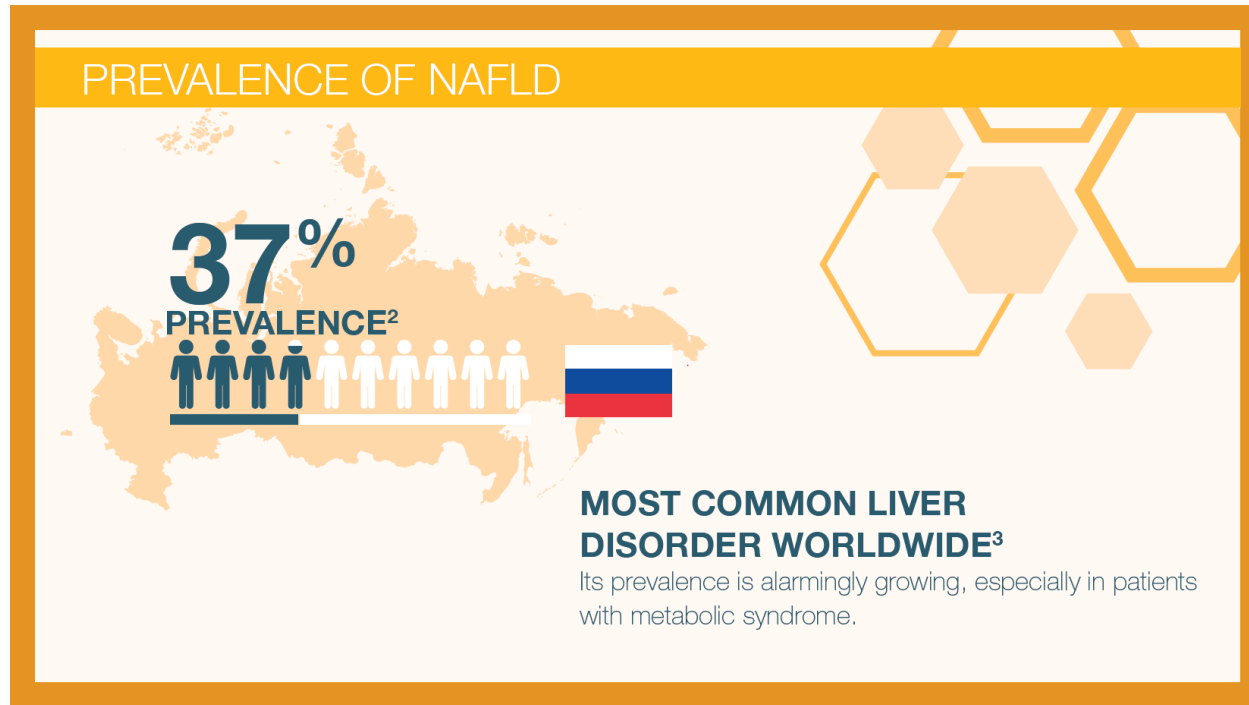




Voice Over: Essential Phospholipids in the management of NAFLD patient in Russia, a Real-World Evidence perspective



Voice Over: Non-Alcoholic Fatty Liver Disease or NAFLD is the most common liver disorder worldwide. It's prevalence is alarmingly growing specially in patients with metabolic syndrome

IMPAIRED DIAGNOSIS

MAJORITY OF
PATIENTS ARE
ASYMPTOMATIC⁴

Voice Over: Diagnosis of NAFLD is impaired as majority of patients are asymptomatic

MANPOWER STUDY



RWE study 2843 Russian patients Evaluating EPLs treatment



A RWE study represents better the patients that HCPs normally deal in their daily practice⁵.

Voice Over: the MANPOWER study is a Real-World Evidence observational study that evaluated Essential Phospholipids as an adjunctive treatment to standard of care in newly diagnosed NAFLD patients

MANPOWER RESULTS

>80% PATIENTS HAVE AT LEAST 2 METABOLIC COMORBIDITIES

80.8%  → N overweight / obesity (%)

74.6%  → N Elevated cholesterol (%)

57.8%  → N hypertension (%)

16.8%  → N T2DM* (%)

Percentages are calculated as n/N. *In this study, mean±SD haemoglobin A1c level at baseline was 6.1%±1.4% (this parameter was available in 843 subjects). T2DM, type 2 diabetes mellitus.

Aproximately 75% of patients have simple steatosis.
The most prominent finding is hepatomegaly.

Voice Over: This study showed that more than 80% of NAFLD patients have at least two metabolic comorbidities. The most common of them are overweight or obesity and elevated cholesterol

CONCLUSIONS

Liver protection with EPLs has a main role in the management of NAFLD



6 months

+90%
Compliance



81.7% physician satisfaction
82% patient satisfaction



The majority of physicians and patients were extremely or very satisfied.

Voice Over: This study observed a 90% compliance rate and high rates of patient and physician satisfaction when adding EPLs to standard treatment, concluding that Liver protection with EPLs has a main role in the management of NAFLD

The advertisement features a dark orange background with a pattern of light orange hexagons and lines. The main text is in white and green. A small red box contains the text 'with EPLs'.

Essentiale[®]

with EPLs

The world's number 1 OTC liver & bile remedy ⁶

1. V. Maev, Et. Al. Real-world comorbidities and treatment patterns among patients with nonalcoholic fatty liver disease receiving phosphatidylcholine as adjunctive therapy in Russia. *BMJ Open Gastroenterology* 10:1136/bmjgast-2019-000307 on 18 August 2019. 2. Ivashkin VT, Drapkina OM, Mayev IV, et al. [The prevalence of non-alcoholic fatty liver disease in patients of outpatient practice in the Russian Federation: the results of the study DIREG 2]. *Russian Journal of Gastroenterology, Hepatology, Coloproctology* 2015;25:31-3. 3. Mavroulianni AN, Migdalis IN. Nonalcoholic fatty liver disease, diabetes mellitus and cardiovascular disease: newer data. *Int J Endocrinol* 2013;2013:450639. 4. Angulo P. Nonalcoholic fatty liver disease. *N Engl J Med* 2002;346:1221-31. 5. Harari S. Randomised controlled trials and real-life studies: two answers for one question. *Eur Respir Rev* 2018; 27:180080. 6. Nicholas Hall's global OTC database 2018, DB6

Voice Over: Essentiale the world's number 1 OTC liver & bile remedy